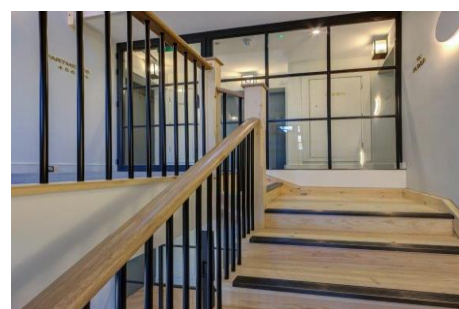
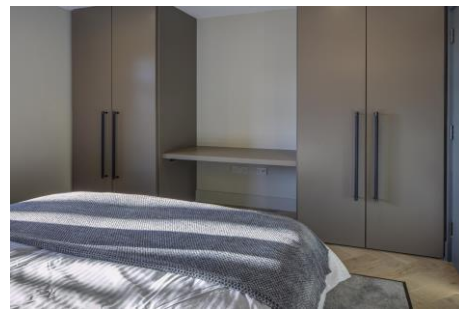
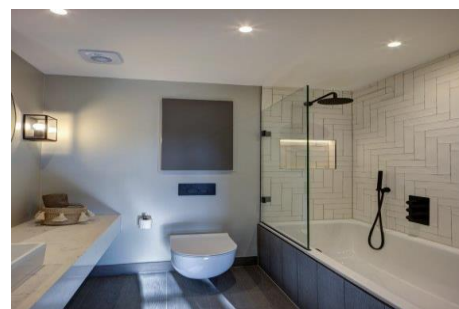




## 4 Weston Court The Broadway Thames Ditton, KT7 0LU

Barons are pleased to offer these new build apartments situated close to both Hampton Court & Thames Ditton villages. Luxury & contemporary in design, this first floor apartment comprises of two bedrooms with fitted wardrobes, a beautifully designed German fitted kitchen with integrated appliances & quartz worksurfaces, two modern bathrooms with porcelain tiling & open plan reception room with herringbone wood flooring. Allocated parking and close to the BR. Station these properties are available now & an internal inspection is strongly recommended.



**NEW BUILD CONTEMPORARY APARTMENT**

**TWO CONTEMPORARY BATHROOMS**

**JULIET BALCONY**

**999 YEAR LEASE**

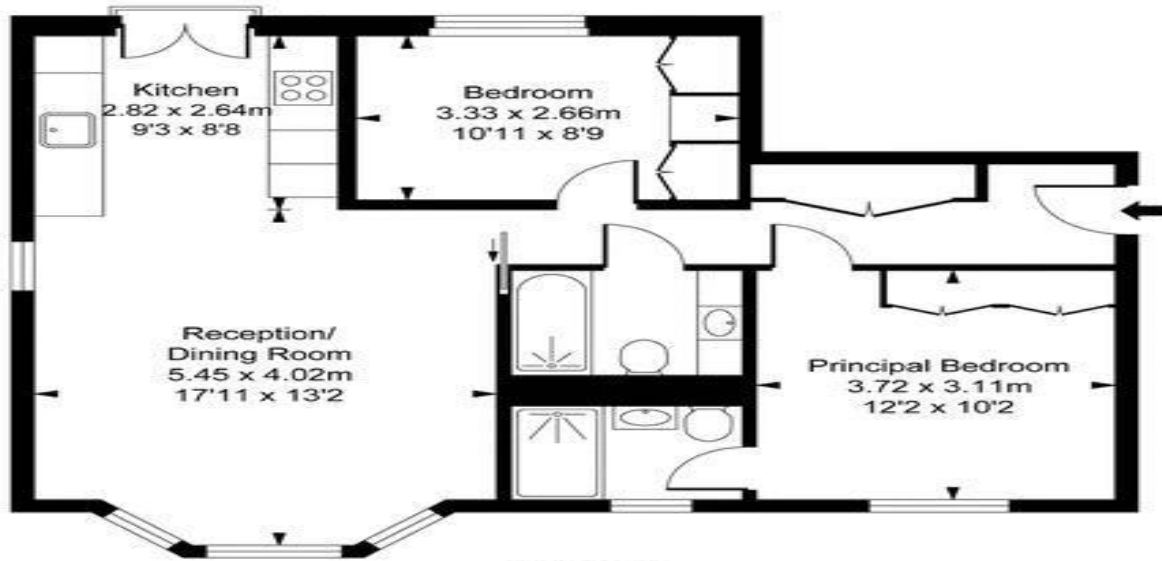
**TWO BEDROOMS WITH FITTED WARDROBES**

**LUXURY FITTED KITCHEN**

**ALLOCATED PARKING**

**CLOSE TO HAMTON COURT & THAMES  
DITTON**

Weston Court,  
The Broadway,  
Thames Ditton, KT7  
Approximate Gross Internal Area  
65.77 sq m / 708 sq ft



First Floor

This plan is not to scale. It is for guidance and not for valuation purposes.  
All measurements and areas are approximate only, and have been prepared in accordance with the current edition of the RICS Code of Measuring Practice.  
© Fulham Performance



**MONEY LAUNDERING REGULATIONS 2003**

intending purchasers will be asked to produce identification and proof of financial status when an offer is received. We would ask for your co-operation in order that there will be no delay in agreeing the sale.

**THE PROPERTY MISDESCRIPTIONS ACT 1991**

The Agent has not tested any apparatus, equipment, fixtures and fittings or services and so cannot verify that they are in working order or fit for the purpose. A Buyer is advised to obtain verification from their Solicitor or Surveyor. References to the Tenure of a Property are based on information supplied by the Seller. The Agent has not had sight of the title documents. A Buyer is advised to obtain verification from their Solicitor. You are advised to check the availability of this property before travelling any distance to view. We have taken every precaution to ensure that these details are accurate and not misleading. If there is any point which is of particular importance to you, please contact us and we will provide any information you require. This is advisable, particularly if you intend to travel some distance to view the property. The mention of any appliances and services within these details does not imply that they are in full and efficient working order. These particulars are in draft form awaiting Vendors confirmation of their accuracy. These details must therefore be taken as a guide only and approved details should be requested from the agents.

